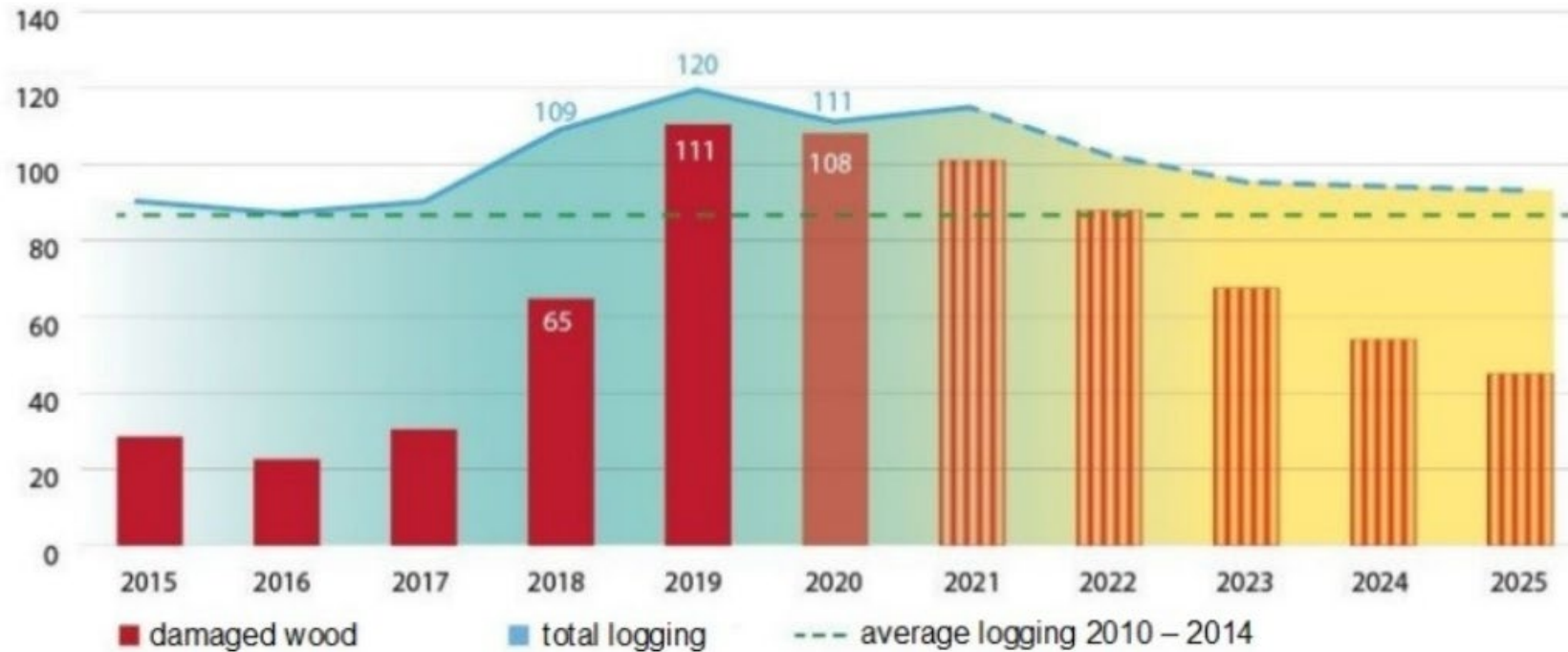


Damaged wood across Central Europe

DAMAGED WOOD TOTAL | 2015 – 2020

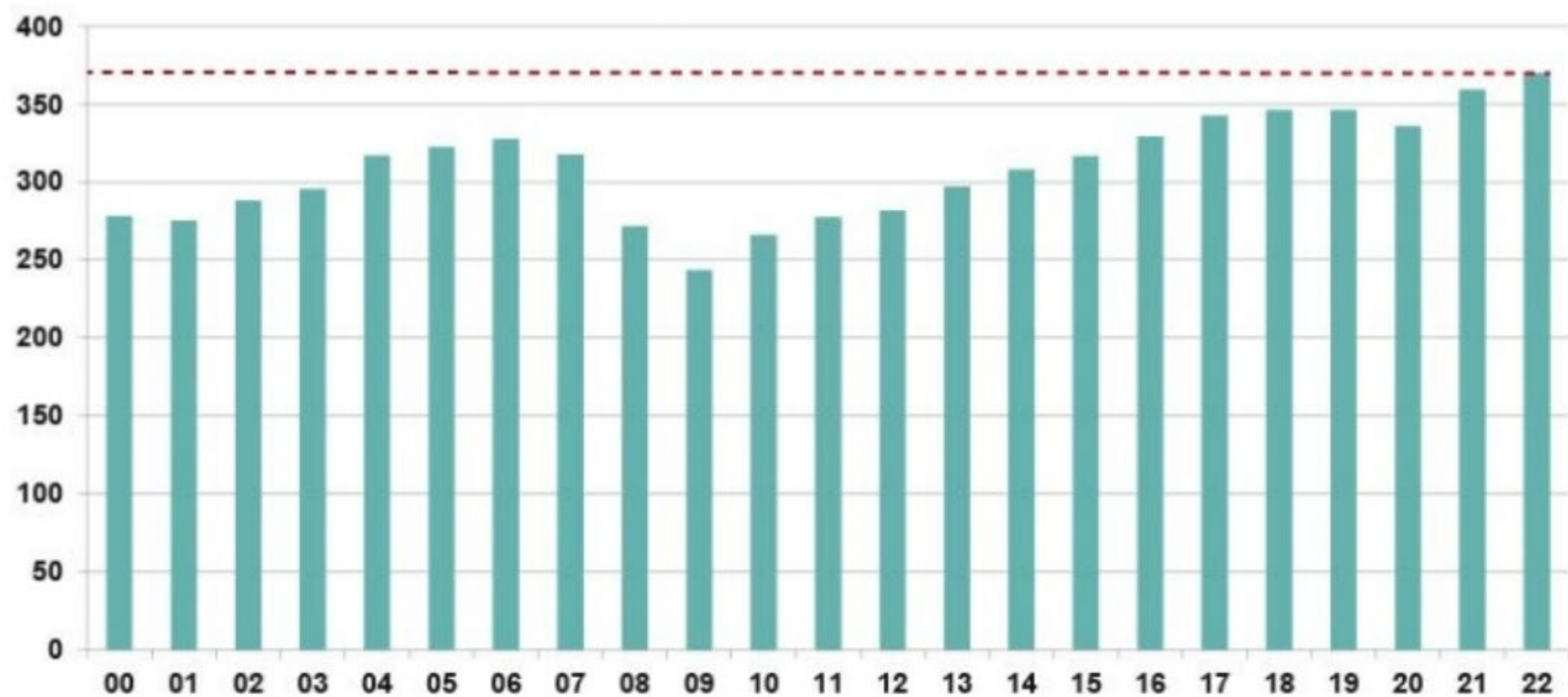
in million cubic meters (hardwood and softwood)



Sources: Destatis, BMEL, CZSO, CTK, HEM, FHP/LKÖ; 2015-2019: actual figures; 2020: official estimates/preliminary data; 2021-2025: Holzkurier's projection | © Holzkurier 2021

©
Holzkurier

Global lumber demand at record level



Development of global softwood lumber demand (in million m³): In 2021/2022, demand could reach a new record level (red line)

©
FEA/Paul Jannke

- Chinese demand should pass 70 million m³ in 2021 and might even reach 75 million m³ in 2022; Stock levels low
- European demand should increase by 2 million m³ to 92 million m³
- Strong demand and insufficient supply at global level: high prices